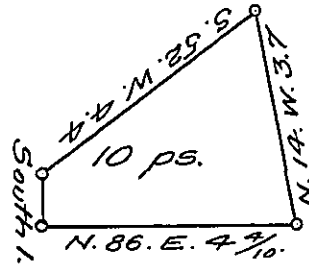


York County Shore



Lancaster County Shore

A Draught of an Island situate in the river Susquehanna in Donegal township Lancaster County Called Green Bush Island Opposite land of Henry Haldeman on the Lancaster side and Snake Island on the York side about the middle of the River Containing ten perches Strict Measure Surveyed in pursuance of a warrant dated the 26th day of September A.D. 1816 granted to Henry Haldeman

p^c Jacob Hibshman D.S.

To Jacob Spangler Esquire }
 Surveyor General }

IN TESTIMONY that the above is a copy of the original remaining on file in the Department of Internal Affairs of Pennsylvania, made conformably to an Act of Assembly approved the 16th day of February 1833, I have hereunto set my hand and caused the Seal of said Department to be affixed at Harrisburg, this thirteenth day of January 1908.

Murray Howard
 Secretary of Internal Affairs.